

Discharge Measurement Summary

Site name WCanal4
Site number 01
Operator(s) TMiller
File name WestCanal_20230509_1214.ft
Comment

Start time	5/9/2023 12:14 PM	Sensor type	Top Setting
End time	5/9/2023 1:31 PM	Handheld serial number	FT2H2219029
Start location latitude	42.810	Probe serial number	FT2P2219014
Start location longitude	-118.871	Probe firmware	1.30
Calculations engine	FlowTracker2	Handheld software	1.7

# Stations	Avg interval (s)	Total discharge (m³/s)
20	40	0.7400

Total width (m)	Total area (m²)	Wetted Perimeter (m)
5.304	3.15299	5.960

Mean SNR (dB)	Mean depth (m)	Mean velocity (m/s)
42	0.595	0.2347

Mean temp (°C)	Max depth (m)	Max velocity (m/s)
7.037	0.853	0.3544

Discharge Uncertainty		
Category	ISO	IVE
Accuracy	1.0%	1.0%
Depth	0.1%	1.9%
Velocity	0.3%	3.5%
Width	0.1%	0.1%
Method	0.9%	
# Stations	2.5%	
Overall	2.9%	4.1%

Discharge equation	Mid Section
Discharge uncertainty	IVE
Discharge reference	Rated

Data Collection Settings	
Salinity	0.000 PSS-78
Temperature	-
Sound speed	-
Mounting correction	0.000 %

Summary overview

No changes were made to this file
Quality control warnings



Discharge Measurement Summary

Site name WCanal4
Site number 01
Operator(s) TMiller
File name WestCanal_20230509_1214.ft
Comment

Station Warning Settings

Station discharge OK

Station discharge < 5.00%

Station discharge caution

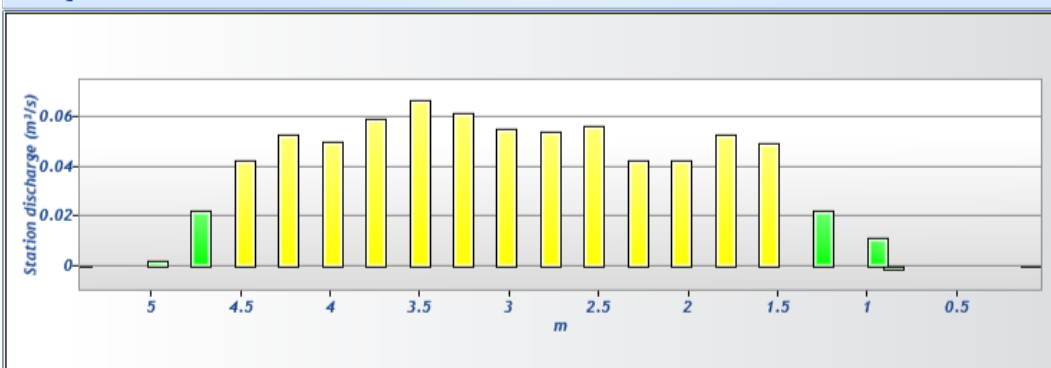
5.00% >= Station discharge < 10.00%

Station discharge warning

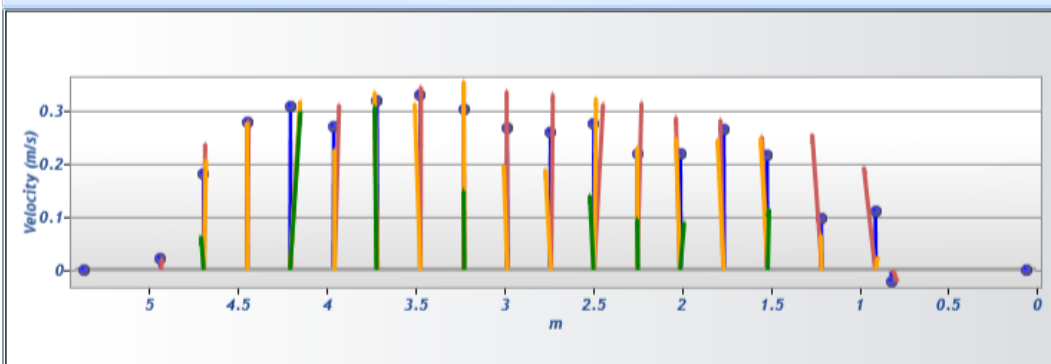
Station discharge >= 10.00%



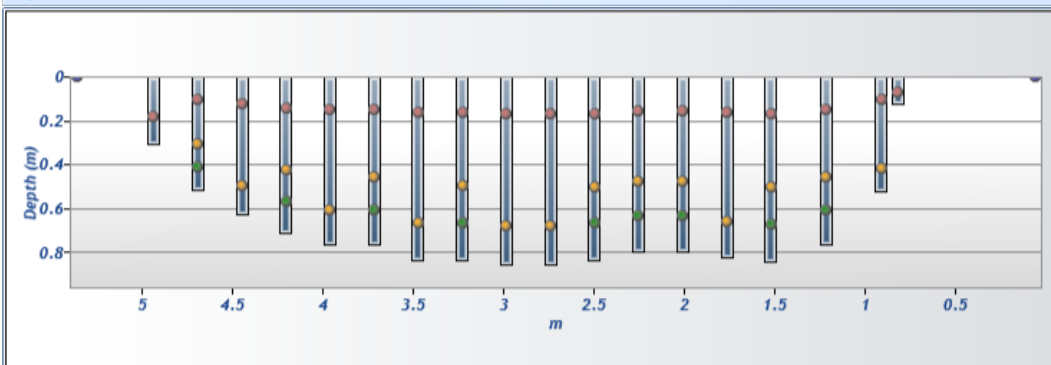
Discharge chart

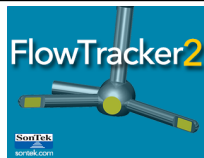


Velocity chart



Depth chart

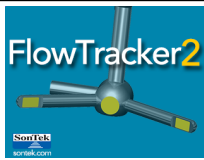




Discharge Measurement Summary

Site name	WCanal4
Site number	01
Operator(s)	TMiller
File name	WestCanal_20230509_1214.ft
Comment	

Measurement results													
St#	Time	Location (m)	Method	Depth (m)	%Depth	Measured Depth (m)	Samples	Velocity (m/s)	Correction	Mean Velocity (m/s)	Area (m ²)	Flow (m ³ /s)	%Q
0	12:14 PM	0.061	None	0.000	0.0000	0.000	0	0.0000	1.0000	-0.0228	0.00000	0.0000	0.00 ✓
1	12:15 PM	0.823	0.6	0.122	0.6000	0.073	80	-0.0228	1.0000	-0.0228	0.05203	-0.0012	-0.16 ✓
2	12:18 PM	0.914	0.2/0.8	0.521	0.2000	0.104	80	0.1928	1.0000	0.1086	0.10326	0.0112	1.52 ✓
2	12:18 PM	0.914	0.2/0.8	0.521	0.8000	0.417	80	0.0244	1.0000	0.1086	0.10326	0.0112	1.52 ✓
3	12:32 PM	1.219	0.2/0.6/0.8	0.762	0.2000	0.152	80	0.2547	1.0000	0.0963	0.23226	0.0224	3.02 ✓
3	12:32 PM	1.219	0.2/0.6/0.8	0.762	0.6000	0.457	80	0.0657	1.0000	0.0963	0.23226	0.0224	3.02 ✓
3	12:32 PM	1.219	0.2/0.6/0.8	0.762	0.8000	0.610	80	-0.0009	1.0000	0.0963	0.23226	0.0224	3.02 ✓
4	12:36 PM	1.524	0.2/0.6/0.8	0.838	0.2000	0.168	80	0.2503	1.0000	0.2150	0.22994	0.0494	6.68 ✓
4	12:36 PM	1.524	0.2/0.6/0.8	0.838	0.6000	0.503	80	0.2478	1.0000	0.2150	0.22994	0.0494	6.68 ✓
4	12:36 PM	1.524	0.2/0.6/0.8	0.838	0.8000	0.671	80	0.1142	1.0000	0.2150	0.22994	0.0494	6.68 ✓
5	12:41 PM	1.768	0.2/0.8	0.823	0.2000	0.165	80	0.2821	1.0000	0.2634	0.20067	0.0529	7.14 ✓
5	12:41 PM	1.768	0.2/0.8	0.823	0.8000	0.658	80	0.2448	1.0000	0.2634	0.20067	0.0529	7.14 ✓
6	12:45 PM	2.012	0.2/0.6/0.8	0.792	0.2000	0.158	80	0.2867	1.0000	0.2177	0.19324	0.0421	5.68 ✓
6	12:45 PM	2.012	0.2/0.6/0.8	0.792	0.6000	0.475	80	0.2473	1.0000	0.2177	0.19324	0.0421	5.68 ✓
6	12:45 PM	2.012	0.2/0.6/0.8	0.792	0.8000	0.634	80	0.0895	1.0000	0.2177	0.19324	0.0421	5.68 ✓
7	12:49 PM	2.256	0.2/0.6/0.8	0.792	0.2000	0.158	80	0.3136	1.0000	0.2175	0.19324	0.0420	5.68 ✓
7	12:49 PM	2.256	0.2/0.6/0.8	0.792	0.6000	0.475	80	0.2302	1.0000	0.2175	0.19324	0.0420	5.68 ✓
7	12:49 PM	2.256	0.2/0.6/0.8	0.792	0.8000	0.634	80	0.0959	1.0000	0.2175	0.19324	0.0420	5.68 ✓
8	12:53 PM	2.499	0.2/0.6/0.8	0.835	0.2000	0.167	80	0.3114	1.0000	0.2744	0.20364	0.0559	7.55 ✓
8	12:53 PM	2.499	0.2/0.6/0.8	0.835	0.6000	0.501	80	0.3231	1.0000	0.2744	0.20364	0.0559	7.55 ✓
8	12:53 PM	2.499	0.2/0.6/0.8	0.835	0.8000	0.668	80	0.1402	1.0000	0.2744	0.20364	0.0559	7.55 ✓
9	12:57 PM	2.743	0.2/0.8	0.853	0.2000	0.171	80	0.3300	1.0000	0.2594	0.20810	0.0540	7.30 ✓
9	12:57 PM	2.743	0.2/0.8	0.853	0.8000	0.683	80	0.1889	1.0000	0.2594	0.20810	0.0540	7.30 ✓
10	1:00 PM	2.987	0.2/0.8	0.850	0.2000	0.170	80	0.3358	1.0000	0.2661	0.20736	0.0552	7.46 ✓
10	1:00 PM	2.987	0.2/0.8	0.850	0.8000	0.680	80	0.1964	1.0000	0.2661	0.20736	0.0552	7.46 ✓
11	1:03 PM	3.231	0.2/0.6/0.8	0.832	0.2000	0.166	80	0.3502	1.0000	0.3019	0.20290	0.0613	8.28 ✓
11	1:03 PM	3.231	0.2/0.6/0.8	0.832	0.6000	0.499	80	0.3544	1.0000	0.3019	0.20290	0.0613	8.28 ✓
11	1:03 PM	3.231	0.2/0.6/0.8	0.832	0.8000	0.666	80	0.1485	1.0000	0.3019	0.20290	0.0613	8.28 ✓
12	1:07 PM	3.475	0.2/0.8	0.832	0.2000	0.166	80	0.3440	1.0000	0.3281	0.20290	0.0666	9.00 ✓
12	1:07 PM	3.475	0.2/0.8	0.832	0.8000	0.666	80	0.3122	1.0000	0.3281	0.20290	0.0666	9.00 ✓
13	1:10 PM	3.719	0.2/0.6/0.8	0.762	0.2000	0.152	80	0.2976	1.0000	0.3179	0.18581	0.0591	7.98 ✓
13	1:10 PM	3.719	0.2/0.6/0.8	0.762	0.6000	0.457	80	0.3340	1.0000	0.3179	0.18581	0.0591	7.98 ✓
13	1:10 PM	3.719	0.2/0.6/0.8	0.762	0.8000	0.610	80	0.3061	1.0000	0.3179	0.18581	0.0591	7.98 ✓
14	1:14 PM	3.962	0.2/0.8	0.762	0.2000	0.152	80	0.3104	1.0000	0.2683	0.18581	0.0498	6.74 ✓
14	1:14 PM	3.962	0.2/0.8	0.762	0.8000	0.610	80	0.2262	1.0000	0.2683	0.18581	0.0498	6.74 ✓
15	1:18 PM	4.206	0.2/0.6/0.8	0.707	0.2000	0.141	80	0.2894	1.0000	0.3055	0.17243	0.0527	7.12 ✓
15	1:18 PM	4.206	0.2/0.6/0.8	0.707	0.6000	0.424	80	0.3176	1.0000	0.3055	0.17243	0.0527	7.12 ✓
15	1:18 PM	4.206	0.2/0.6/0.8	0.707	0.8000	0.566	80	0.2974	1.0000	0.3055	0.17243	0.0527	7.12 ✓
16	1:21 PM	4.450	0.2/0.8	0.625	0.2000	0.125	80	0.2782	1.0000	0.2776	0.15236	0.0423	5.72 ✓
16	1:21 PM	4.450	0.2/0.8	0.625	0.8000	0.500	80	0.2770	1.0000	0.2776	0.15236	0.0423	5.72 ✓
17	1:25 PM	4.694	0.2/0.6/0.8	0.512	0.2000	0.102	80	0.2370	1.0000	0.1787	0.12486	0.0223	3.01 ✓
17	1:25 PM	4.694	0.2/0.6/0.8	0.512	0.6000	0.307	80	0.2074	1.0000	0.1787	0.12486	0.0223	3.01 ✓
17	1:25 PM	4.694	0.2/0.6/0.8	0.512	0.8000	0.410	80	0.0630	1.0000	0.1787	0.12486	0.0223	3.01 ✓
18	1:29 PM	4.938	0.6	0.305	0.6000	0.183	80	0.0209	1.0000	0.0209	0.10219	0.0021	0.29 ✓
19	1:31 PM	5.364	None	0.000	0.0000	0.000	0	0.0000		0.0209	0.00000	0.0000	0.00 ✓



Discharge Measurement Summary

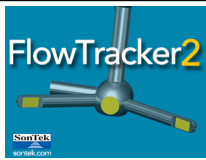
Site name WCanal4
Site number 01
Operator(s) TMiller
File name WestCanal_20230509_1214.ft
Comment

Quality Control Settings

Maximum depth change 50.00%
Maximum spacing change 100.00%
SNR threshold 10 dB
Standard error threshold 0.0100 m/s
Spike threshold 10.00%
Maximum velocity angle 20.0 deg
Maximum tilt angle 5.0 deg

Quality control warnings

St#	Time	Location (m)	Method	Depth (m)	%Depth	Measured Depth (m)	Warnings
1	12:15 PM	0.823	0.6	0.122	0.6000	0.073	Water Depth > QC, Large SNR Variation, SNR Threshold Variation, Velocity Angle > QC
2	12:18 PM	0.914	0.2/0.8	0.521	0.2000	0.104	Water Depth > QC, Velocity Angle > QC
2	12:18 PM	0.914	0.2/0.8	0.521	0.8000	0.417	Water Depth > QC, Velocity Angle > QC
3	12:32 PM	1.219	0.2/0.6/0.8	0.762	0.2000	0.152	Stn Spacing > QC
3	12:32 PM	1.219	0.2/0.6/0.8	0.762	0.6000	0.457	Stn Spacing > QC
3	12:32 PM	1.219	0.2/0.6/0.8	0.762	0.8000	0.610	Stn Spacing > QC
10	1:00 PM	2.987	0.2/0.8	0.850	0.2000	0.170	Large SNR Variation, Standard Error > QC
10	1:00 PM	2.987	0.2/0.8	0.850	0.8000	0.680	Large SNR Variation, Standard Error > QC
19	1:31 PM	5.364	None	0.000	0.0000	0.000	Water Depth > QC



Discharge Measurement Summary

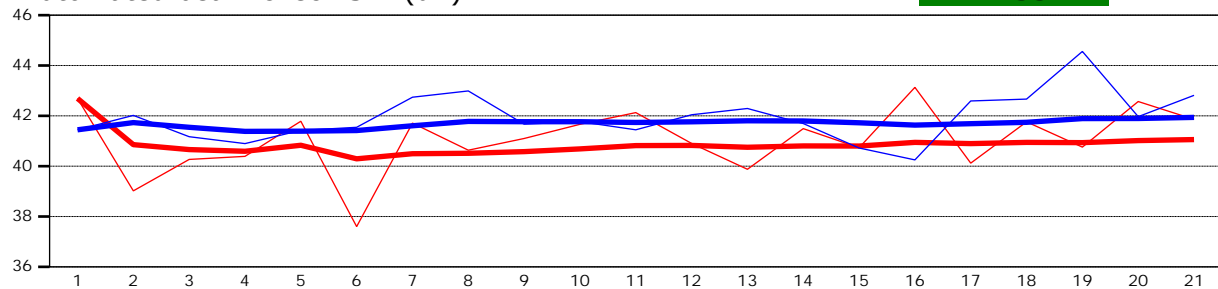
Site name WCanal4
Site number 01
Operator(s) TMiller
File name WestCanal_20230509_1214.ft
Comment

Beam 1	
Beam 2	

Automated beam check Start time 5/9/2023 12:14:34 PM

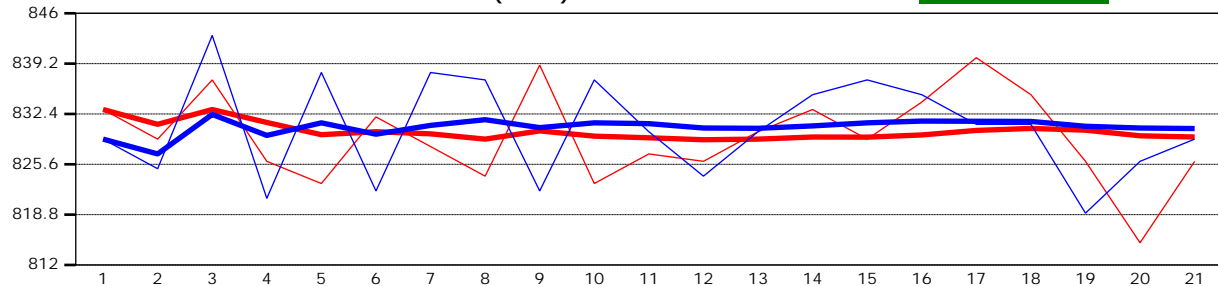
Automated beam check SNR(dB)

PASS



Automated beam check Noise level(cnts)

PASS



Automated beam check Quality control warnings

No quality control warnings



Discharge Measurement Summary

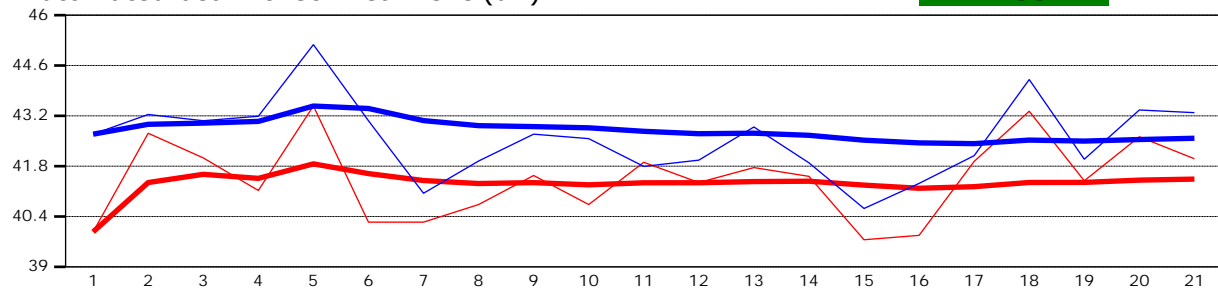
Site name WCanal4
Site number 01
Operator(s) TMiller
File name WestCanal_20230509_1214.ft
Comment

Beam 1	
Beam 2	

Automated beam check Start time 5/9/2023 12:14:34 PM

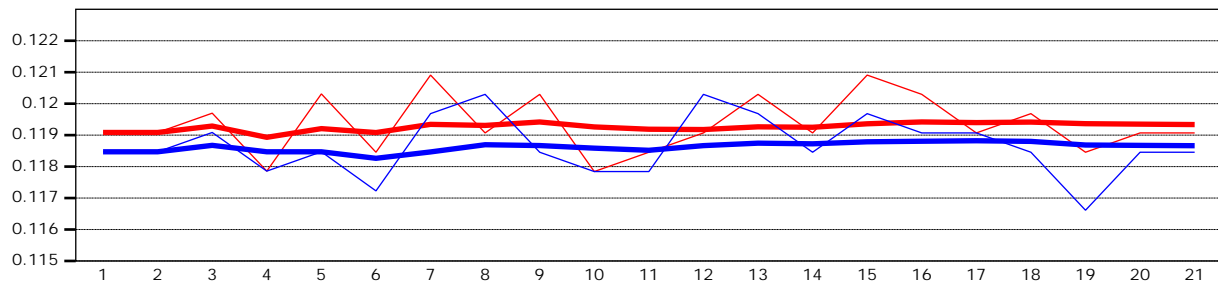
Automated beam check Peak level(dB)

PASS



Automated beam check Peak position(m)

PASS



Automated beam check Quality control warnings

No quality control warnings